



Grant Agreement N° 215483

Title: Updated Project Web Portal

Authors: UniDue

Editor: Eric Schmieders (UniDue)

Reviewers: Neil Maiden (CITY)

Identifier: Deliverable #PO-SoE-1.2.9d

Type: Deliverable

Version: 1.0

Date: Andreas Metzger

Status: Final

Class: External

Management Summary

This document provides an overview of the of the S-Cube Web portal at Month 24 of the Network of Excellence.

Copyright © 2010 by the S-Cube consortium – All rights reserved.

The research leading to these results has received funding from the European Community's Seventh Framework Programme FP7/2007-2013 under grant agreement n° 215483 (S-Cube).

Members of the S-Cube consortium:

University of Duisburg-Essen (Coordinator)	Germany
Tilburg University	Netherlands
City University London	U.K.
Consiglio Nazionale delle Ricerche	Italy
Center for Scientific and Technological Research	Italy
The French National Institute for Research in Computer Science and Control	France
Lero - The Irish Software Engineering Research Centre	Ireland
Politecnico di Milano	Italy
MTA SZTAKI – Computer and Automation Research Institute	Hungary
Vienna University of Technology	Austria
Université Claude Bernard Lyon	France
University of Crete	Greece
Universidad Politécnica de Madrid	Spain
University of Stuttgart	Germany
University of Hamburg	Germany
Vrije Universiteit Amsterdam	Netherlands

Published S-Cube documents

All public S-Cube deliverables are available from the S-Cube Web Portal at the following URL:

<http://www.s-cube-network.eu/results/deliverables/>

The S-Cube Deliverable Series

Vision and Objectives of S-Cube

The Software Services and Systems Network (S-Cube) will establish a unified, multidisciplinary, vibrant research community which will enable Europe to lead the software-services revolution, helping shape the software-service based Internet which is the backbone of our future interactive society.

By integrating diverse research communities, S-Cube intends to achieve world-wide scientific excellence in a field that is critical for European competitiveness. S-Cube will accomplish its aims by meeting the following objectives:

- Re-aligning, re-shaping and integrating research agendas of key European players from diverse research areas and by synthesizing and integrating diversified knowledge, thereby establishing a long-lasting foundation for steering research and for achieving innovation at the highest level.
- Inaugurating a Europe-wide common program of education and training for researchers and industry thereby creating a common culture that will have a profound impact on the future of the field.
- Establishing a pro-active mobility plan to enable cross-fertilisation and thereby fostering the integration of research communities and the establishment of a common software services research culture.
- Establishing trust relationships with industry via European Technology Platforms (specifically NESSI) to achieve a catalytic effect in shaping European research, strengthening industrial competitiveness and addressing main societal challenges.
- Defining a broader research vision and perspective that will shape the software-service based Internet of the future and will accelerate economic growth and improve the living conditions of European citizens.

S-Cube will produce an integrated research community of international reputation and acclaim that will help define the future shape of the field of software services which is of critical for European competitiveness. S-Cube will provide service engineering methodologies which facilitate the development, deployment and adjustment of sophisticated hybrid service-based systems that cannot be addressed with today's limited software engineering approaches. S-Cube will further introduce an advanced training program for researchers and practitioners. Finally, S-Cube intends to bring strategic added value to European industry by using industry best-practice models and by implementing research results into pilot business cases and prototype systems.

S-Cube materials are available from URL: <http://www.s-cube-network.eu/>

1 Overview of the S-Cube Web Portal

The S-Cube Web Portal is one of the key means for dissemination in S-Cube. The portal is accessible at the following URL: <http://www.s-cube-network.eu/>.

The portal is a web site that publishes the results produced by the S-Cube members, provides access to news and events about the network and provides further information about the S-Cube consortium as well as the activities jointly carried out in the network. In addition to the public pages of the Portal, the S-Cube Web Portal provides a restricted working area, which is only accessible to the S-Cube researchers.

The figure below shows the home page of the S-Cube Web Portal as of Month 31 of the Network of Excellence. The key features presented to the visitors of the portal are highlighted.

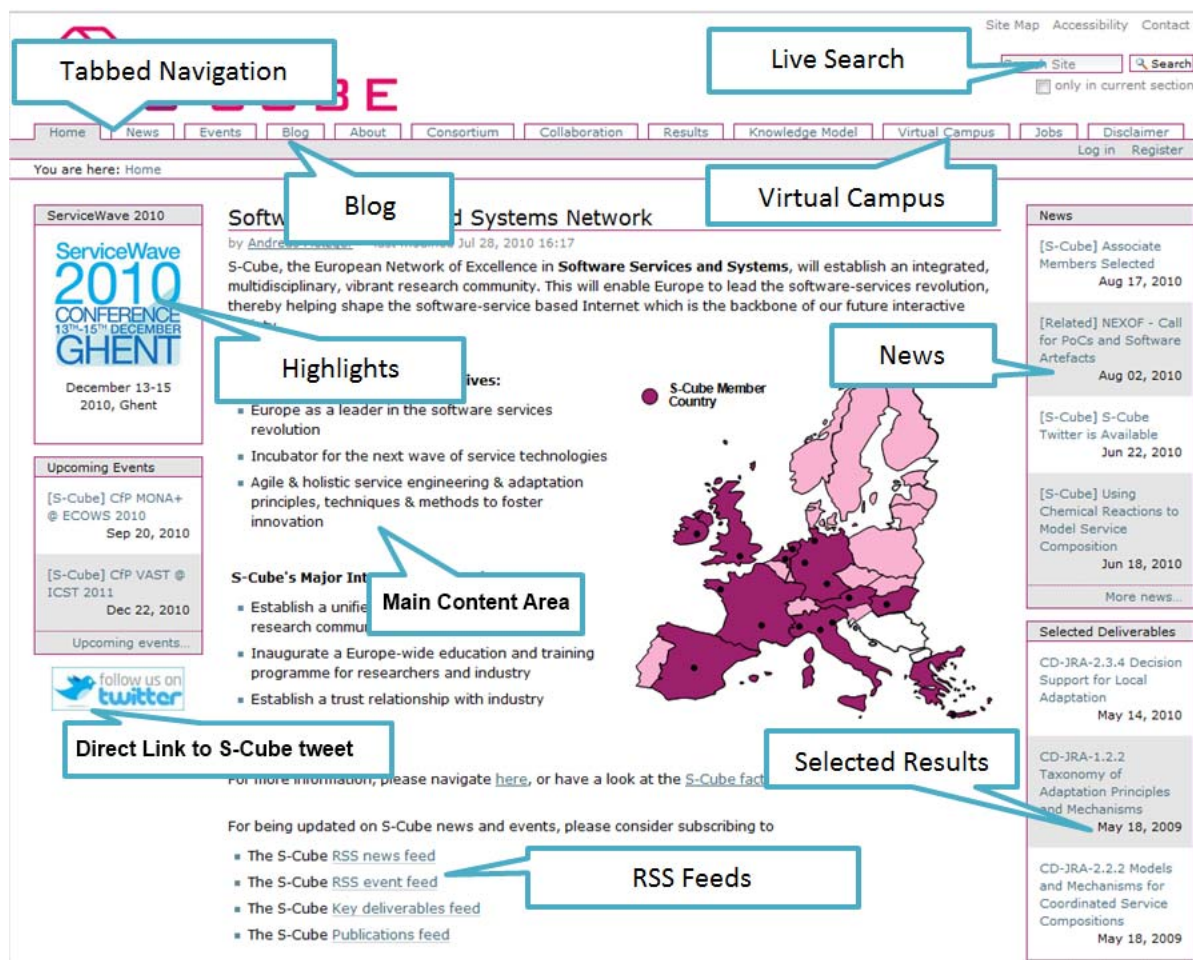


Figure 1: Screenshot of the S-Cube Web Portal (Month 31)

2 S-Cube Web Portal Users

In general, the S-Cube Web Portal supports three types of users, or levels of access:

- **Anonymous users:** have access only to the public pages of the portal
- **Registered users:** have access to all public areas and are also granted access to additional contents: e.g., course modules and newsletter
- **Members,** i.e., people working in the teams of the beneficiaries and associate partners, have the same access as registered users and are also granted access to the private working area.

The following table shows the key performance indicators of the S-Cube web portal:

Date	01-09-2008 – 01-09-2009	01-09-2009 – 01-09-2010	Comparison
Visits	20 084	43 254	+115%
Page Views	114 102	144 473	+27%
Unique Visitors	12 140	25 450	+110%
Page Rank	6 out of 10	7 out of 10	+1
Registered Users	259	308	+19%

3 Update of S-Cube Web Portal

The overall structure of the S-Cube Web-Portal has been created and updated as follows (the items of the column “Portal Area” mostly equates to the Tabbed Navigation items of the web portal navigation):

Portal Area	Up to Month 31	After Month 31
Home	RSS Feeds added Factsheet updated	Continuous update Alignment of layout and content of web portal to target audiences – working on a S-Cube Guidepost to provide a “path” through all available content Presenting an initial visitor with an overview of the project that will make sense to a "technically literate" party Rework the navigation to make it less cluttered
News	Updated regularly (e.g. reports from workshops, conferences and S-Cube events) Publication of Newsletter	Continuous update
Events	Updated regularly (e.g., announcement of S-Cube and related events)	Continuous update
About S-Cube	Update of contents to reflect the closing of the EDSL Target audience scoped and related to relevant content	Update planned and addition of: 'About Software Services' – a description of services for the layperson, including description of a scenario Reworking the whole section, shorten the text, update the graphics to be easier to understand for the layman. Possible consolidation with “Consortium” in accordance to simplify the navigation.
Virtual Campus	Interlink with S-Cube virtual campus (including education and training events, material)	Continuous Update
Collaborations	Ongoing collaborations with ICT and other projects , as well as external parties (including collaboration opportunities)	Provide more information on active collaborations and outcomes.

Consortium	Update: Partners Link to portal Adding Associate Members	Continuous update
Results	Update: Deliverables and Publications	Continuous update
Knowledge Model	Update of KM	Continuous update
Further contents	<p>Blog added</p> <p>Social bookmarking added & activated</p> <p>Created a Twitter-channel and promoted it through the sidebar of the portal</p> <p>Syndication with other portals (via RSS feeds), specifically SSAIE portal</p> <p>Added a new tool to manage publications and added it to the site, instead of just providing a link</p>	<p>Planned, addition of:</p> <p>Information and archive of publicity material (“press room”)</p> <p>Add information to the web portal to make the portal to a one-stop-shop (e.g. List of relevant websites, software tools, registries of software services) – first version of the list added, still needs reworking</p> <p>Integration of entry points for target audience planned (Guide post mentioned above)</p>
'Industry Outreach'	Results of the Industry questionnaire is available online (in S-Cube Workspace)	Dedicated web pages for industry collaboration planned
Working Area	update	Continuous update