

S-CUBE

SOFTWARE SERVICES AND SYSTEMS NETWORK

VIRTUAL CAMPUS

The S-Cube **Virtual Campus** provides access to the S-Cube research results in an easily digestible way, that is accessible for self-education. The main features and material offered by the Virtual Campus are:

1. **Single point of entry** to information about the S-Cube research results, which is more result-oriented than the official project web site. This single point of entry allows accessing research papers, as well as associated presentations, deliverables and other relevant project outcomes.
2. **Learning packages**, that provide information in condensed form, so that students, researchers and practitioners can easily discover and self-educate themselves about the research results relevant to them.
3. **Discussion forum** to enable discussion of S-Cube results, and services research in general, so that the Virtual Campus can become a central meeting point for the services community.
4. Fully functional Moodle-based **e-learning platform**, which can be used for courses in the services area.

Fig.1: Virtual Campus Overview

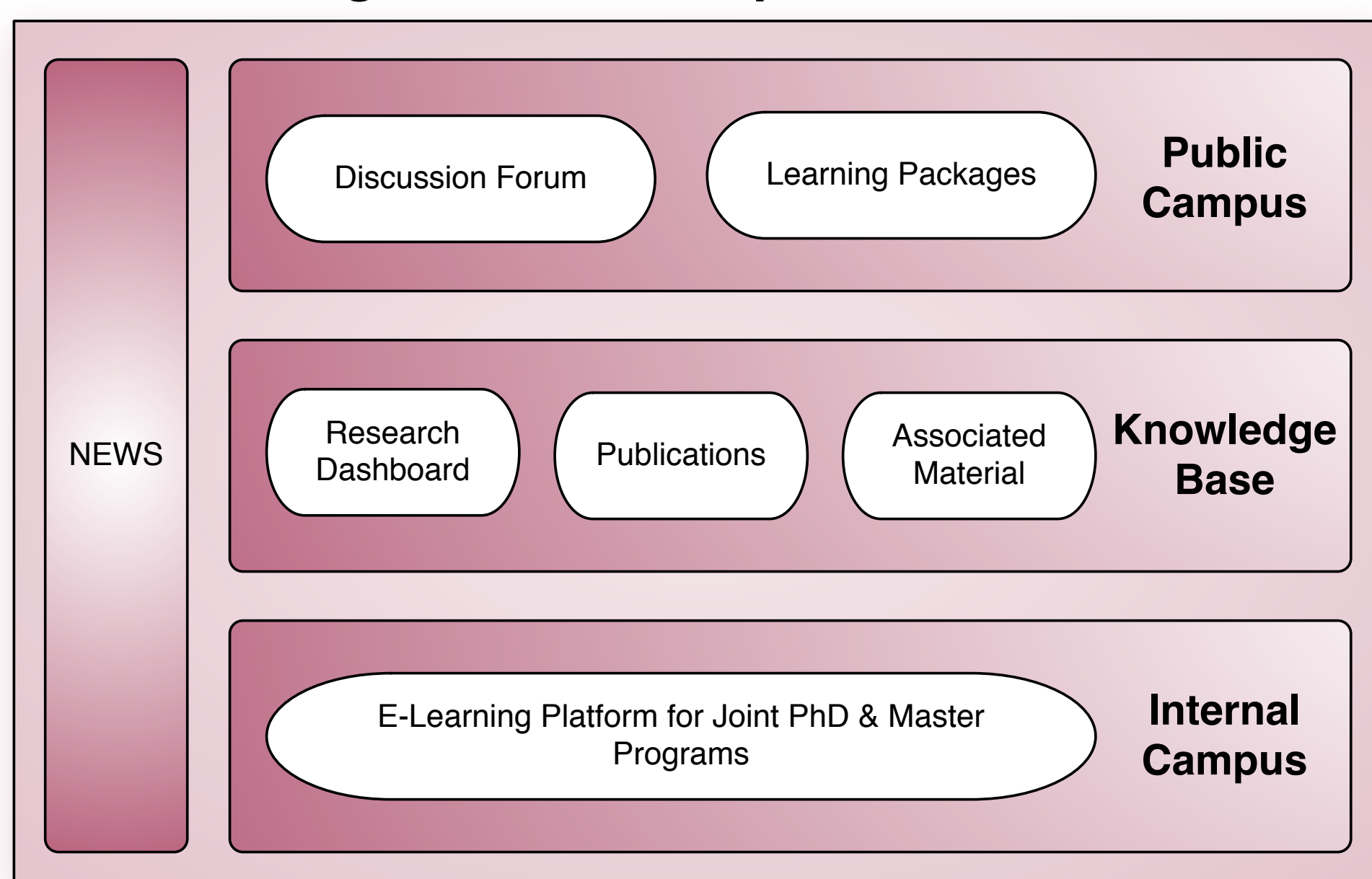
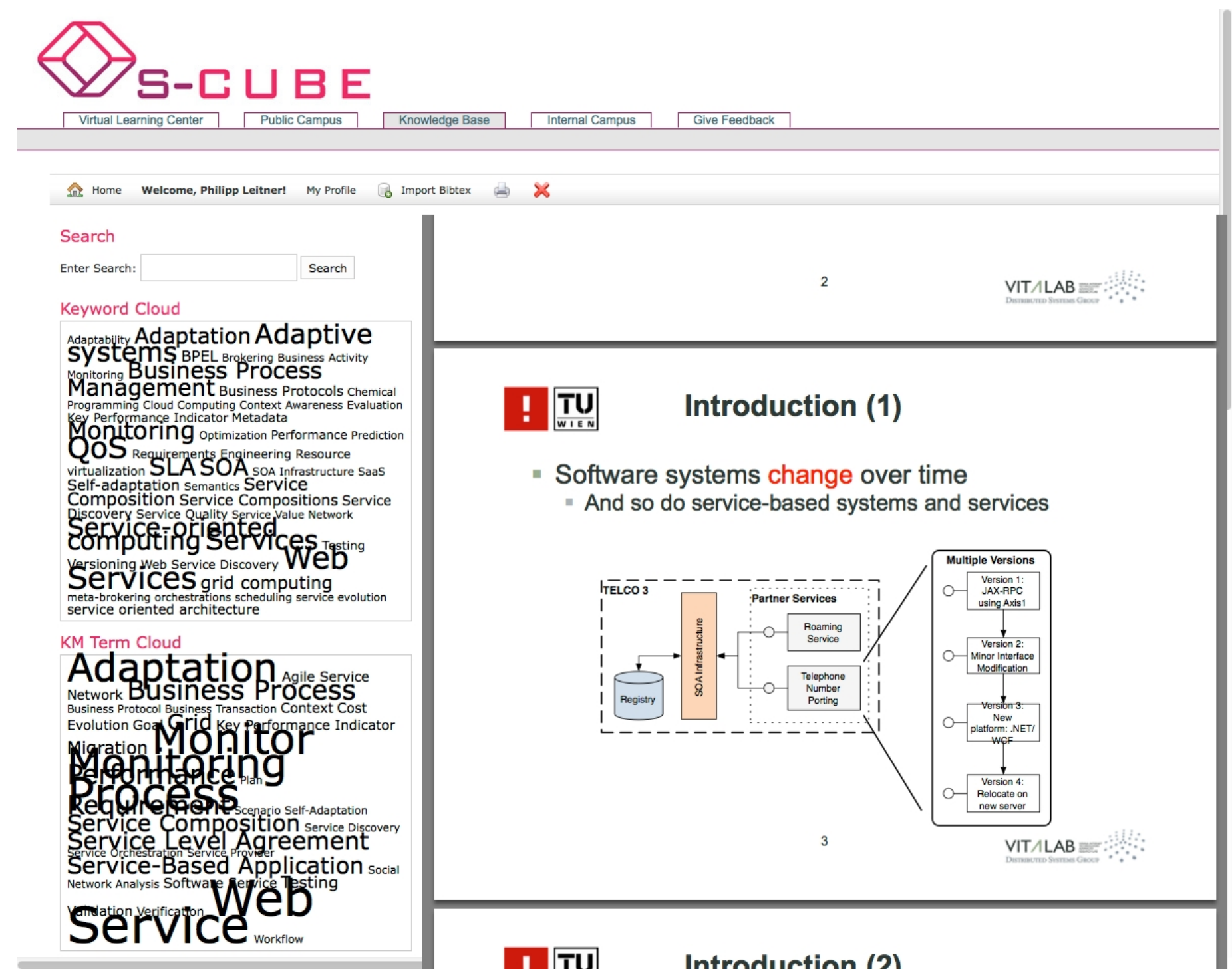


Fig.2: Virtual Campus Research Dashboard



Central tools of the Virtual Campus:

- The **Dashboard** (see Fig.2), which can be used to browse all S-Cube publications, along with important metadata and associated material. Free registration is required to access this part of the Virtual Campus.
- The **Research Overview** is freely available without registration, and can be used to quickly get an overview over the research conducted in S-Cube, categorized along a number of **research clusters**.
- Various additional community services are available, e.g., forums, a Moodle installation for tool support, etc.

Public alpha version is online. Mostly functional, but currently in test mode. The Research Overview functionality will become available in autumn 2011.

Visit the S-Cube **Virtual Campus**
<http://www.s-cube-network.eu/vc>

S-Cube is the Software Services and Systems **Network of Excellence** establishing an integrated, multidisciplinary, vibrant research community to enable Europe to lead the software-services revolution, **helping shape the software-service based Internet**

At a Glance

Project Type: FP7 Network of Excellence
Program: SSAIE
Duration: 01.03.2008 – 29.02.2012
Project Coordinator: Prof. Dr. Klaus Pohl
 University of Duisburg-Essen, Germany
Scientific Director: Prof. Dr. Mike Papazoglou,
 Tilburg University,
 The Netherlands



Further information:
 Email: contact@s-cube-network.eu
 Web: <http://www.s-cube-network.eu>

S-Cube is funded by the European Community's Seventh Framework Programme FP/2007-2013 under Objective 1.2 'Services and Software Architectures, Infrastructures and Engineering'